

## **Historic, Archive Document**

Do not assume content reflects current scientific knowledge, policies, or practices.





Radiance

Red Radiance



Mrs. Aaron Ward

SPRING, 1927  
*Trade-List*  
*of*  
 Lovett's Nursery  
 Little Silver, New Jersey



Bess Lovett. A climbing variety



Alida Lovett. A climbing variety



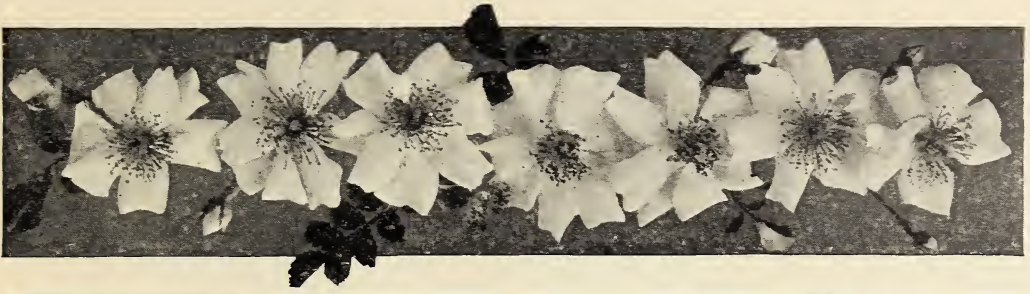
*World's Largest Growers of Privet*

**L**OVETT'S NURSERY is located one mile from Little Silver depot, two miles from Red Bank, forty miles from New York City, and five miles from Long Branch. To reach it from NEW YORK CITY, take the Central Railroad of New Jersey (foot of Liberty Street or 23d Street), or the Pennsylvania Railroad (Cortlandt Street, or 32d Street and 7th Avenue). From PHILADELPHIA take the Pennsylvania Railroad (Broad and Market Streets), or the Philadelphia and Reading Railroad (Bound Brook Route). In all cases get tickets to LITTLE SILVER; good on either road.

*Telephone No. 1475 Red Bank*



We have a full quarter-million splendid, heavy, transplanted plants of *Berberis Thunbergi* in stock



---

---

## *TRADE-LIST*

*OF*

# LOVETT'S NURSERY

Little Silver, New Jersey

---

*SPRING, 1927*

---

---

### TERMS AND CONDITIONS OF SALE

**SPECIAL NOTICE.** We exercise the greatest care to keep our stock clean and true to name. Should any be otherwise, we will return the money paid or replace it with other stock, but beyond this we are not liable for damage. A sure indication of the purity of our stock is that our customers continue to deal with us year after year. A Certificate of Inspection is attached to each shipment.

**PRICES** in this Trade-List apply to orders placed only by nurserymen, florists, or dealers. Items offered in our Retail Catalogue for spring 1927 (Catalogue No. 120), but not offered in this Trade-List, will be supplied to the Trade at a discount of 20 per cent from the each, dozen, and 100 rates quoted in the Retail Catalogue.

Not less than 5 of a variety will be supplied at the 10 rate, not less than 50 of a variety at the 100 rate, and not less than 500 of a variety at the 1,000 rate.

**PACKING.** All goods are carefully packed in boxes or bales, for which we charge the cost of material only. Please make it clear in your order whether goods are to be shipped by freight or express, and name route. After delivery to forwarders, all articles travel at the risk of the purchaser, and if loss or delay occurs, the forwarders alone are responsible. We deliver all goods to the express office or freight depot at Little Silver or Red Bank without cartage charges. When ordering stock shipped by express C. O. D., please remit one-quarter the amount of the purchase price.

**CLAIMS,** if made upon receipt of goods, will be carefully and cheerfully examined, and adjusted. Claims made fifteen days after receipt of goods will not be entertained.

**TERMS.** We offer the usual terms to those of known responsibility, but must have satisfactory business references from others, or cash with order. Please use printed stationery or enclose business card.



## EVERBLOOMING ROSES

### HYBRID TEAS AND TEAS

Roses have such a strong appeal to all classes of people, for so many different reasons, that the market for them is unlimited. It is simply a proposition of supplying them dependable varieties in properly grown, high-grade stock. Give people good roses, and they will demand more; give them poor roses, and you lose them as customers. Either they become disgusted with roses or buy elsewhere.

Obviously, **nurserymen should obtain the best possible stock**, well-grown, well-graded, and properly handled. Every year there is a serious shortage of desirable kinds, and particular nurserymen find it difficult to secure a sufficient supply of first-rate plants.

Lovett's Roses are the solution of this problem. Plants of absolutely first-grade quality, carefully chosen varieties, handled with the skill of long experience, they satisfy all requirements of the most exacting purchasers.

B. indicates that the plants are budded.

O.R. indicates that the plants are growing on their own roots.

Prices quoted are for strictly first-grade plants, f. o. b. Little Silver, N. J. We can supply limited quantities of most varieties in a medium grade at 10 cents less per plant than we ask for the heavier grade.

		10	100		10	100
Alexander Hill Gray. O.R. and B.		10	100		\$4 00	\$35 00
Lemon-yellow.....						
America, Hill's. O.R. and B. Rose-pink.....	4 00		35 00			
Antoine Rivoire B. Pale flesh or yellow.....	4 00		35 00			
Bessie Brown. B. Ivory-white.....	4 00		35 00			
British Queen. B. Pure white.....	4 00		35 00			
Charles K. Douglas. O.R. Scarlet-red.....	4 00		35 00			
Cheerful. B. Flame-pink.....	4 00		35 00			
Chrissie MacKellar. B. Orange-pink.	4 00		35 00			
Clara Watson. O.R. Silvery flesh....	4 00		35 00			
Columbia. O.R. and B. Peachblow-pink.....	4 00		35 00			
Constance. B. Golden yellow.....	4 50		40 00			
Countess Clanwilliam. O.R. and B. Peach-pink to red.....	4 00		35 00			
Crimson Queen. O.R. and B. Velvety crimson.....	4 00		35 00			
Crusader. O.R. and B. Rich crimson.....	4 00		35 00			
Dean Hole. B. Pink shaded salmon..	4 00		35 00			
Double Pink Killarney. O.R. Pink..	\$4 00		\$35 00			
Double White Killarney. O.R. and B. White.....	4 50		40 00			
Dr. Joseph Drew. B. Salmon-yellow.	4 50		40 00			
Duchess of Albany. O.R. Red.....	4 00		35 00			
Duchess of Wellington. O.R. and B. Saffron-yellow.....	4 50		40 00			
Ecarlate. O.R. Brilliant scarlet....	4 00		35 00			
Edith Part. B. Rosy red to yellow..	4 00		35 00			
Edward Mawley. O.R. and B. Crimson.....	4 00		35 00			
Etoile de France. O.R. and B. Velvety crimson.....	4 00		35 00			
Etoile de Lyon. O.R. Yellow.....	4 00		35 00			
F. W. Dunlop. O.R. Pink.....	4 00		35 00			
Gen. MacArthur. O.R. and B. Velvety crimson.....	4 00		35 00			
Gen.-Superior Arnold Janssen. O.R. and B. Glowing carmine.....	4 00		35 00			
George C. Waud. B. Glowing vermilion to orange-red.....	4 00		35 00			
Georges Clemenceau. B. Bright orange, shaded carmine.....	4 50		40 00			

HYBRID TEA AND TEA ROSES, continued

	<sup>10</sup>	<sup>100</sup>
Gorgeous. B. Orange-yellow.....	\$4 50	\$40 00
Gruss an Teplitz. O.R. and B. Finest red bush Rose.....	4 00	35 00
Hadley. B. Crimson-red.....	4 00	35 00
Harry Kirk. B. Sulphur-yellow....	4 50	40 00
Helen Gould. O.R. Watermelon-red.	4 00	35 00
Helen Taft. O.R. Pink.....	4 00	35 00
Hermosa. O.R. and B. Bright pink..	4 00	35 00
Hoosier Beauty. B. Glowing scarlet-crimson.....	4 00	35 00
H. V. Machin. B. Scarlet-crimson...	4 00	35 00
Jonkheer J. L. Mock. O.R. and B. Pink.....	4 00	35 00
Joseph Hill. B. Pink, shaded salmon.	4 00	35 00
Kaiserin Auguste Viktoria. O.R. and B. White.....	4 00	35 00
Killarney. O.R. and B. Pink.....	4 00	35 00
Killarney Brilliant. B. Pink.....	4 00	35 00
La France. O.R. and B. Silver-pink..	4 00	35 00
La Tosca. O.R. Soft pink.....	4 00	35 00
Lady Hillingdon. O.R. and B. Apricot-yellow.....	4 50	40 00
Lady Pirrie. O.R. and B. Coppery reddish salmon.....	4 00	35 00
Lady Ursula. B. Flesh-pink.....	4 00	35 00
Lillian Moore. B. Indian-yellow....	4 50	40 00
Louise Baldwin. B. Rich orange....	4 50	40 00
Maman Cochet. O.R. and B. Coral-pink.....	4 00	35 00
Miss Amelia Gude. B. Corn-yellow..	4 50	40 00
Miss Cynthia Forde. B. Deep rose to pink.....	4 00	35 00
Mlle. Franziska Krüger. O.R. Deep pinkish chamois.....	4 50	40 00
Mme. Abel Chatenay. O.R. and B. Pink.....	4 00	35 00
Mme. Caroline Testout. O.R. and B. Satiny pink.....	4 00	35 00
Mme. Jules Grolez. O.R. and B. Rose-pink.....	4 00	35 00
Mme. Léon Pain. O.R. and B. Silvery pink.....	4 00	35 00
Mrs. Aaron Ward. B. Indian-yellow.	4 50	40 00
Mrs. A. R. Waddell. O.R. and B. Reddish saffron.....	4 00	35 00
Mrs. Ambrose Ricardo. B. Honey-yellow.....	4 50	40 00
Mrs. Charles Lamplough. O.R. Cream and lemon.....	4 50	40 00
Mrs. Charles E. Pierson. O.R. Orange, flushed red.....	4 00	35 00
Mrs. Farmer. B. Indian-yellow....	4 50	40 00
Mrs. H. R. Darlington. O.R. White..	4 00	35 00
Mrs. MacKellar. O.R. Cream to yellow.....	4 00	35 00
Mrs. Mona Hunting. B. Ecu to yellow.....	4 00	35 00
Mrs. B. R. Cant. B. Dark pink.....	4 00	35 00
Mrs. S. K. Rindge. B. Deep golden yellow.....	4 50	40 00
Mrs. Wakefield Christie-Miller. B. Bright pink.....	4 00	35 00
Mrs. Wemyss Quin. B. Lemon-chrome.....	4 50	40 00
My Maryland. B. Bright pink.....	4 00	35 00
Old Gold. O.R. and B. Reddish orange.....	4 00	35 00

HYBRID TEA AND TEA ROSES, continued

	<sup>10</sup>	<sup>100</sup>
Premier. B. Deep rose.....	\$4 00	\$35 00
Prince E. de Arenberg. O.R. Scarlet.	4 00	35 00
Queen Beatrice. O.R. Clear pink....	4 00	35 00
Queen of Fragrance. B. Shell-pink..	4 00	35 00
Radiance. O.R. and B. Rich pink...	4 00	35 00
Red Cochet. O.R. Light red.....	4 00	35 00
Red Premier. O.R. Red.....	4 00	35 00
Red-Letter Day. O.R. Scarlet-crimson.....	4 00	35 00
Robin Hood. O.R. and B. Rosy scarlet.....	4 00	35 00
Sunburst. O.R. and B. Orange-yellow.....	4 50	40 00
T. F. Crozier. B. Canary-yellow....	4 50	40 00
Viscountess Folkestone. O.R. Cream	4 00	35 00
Wellesley. O.R. and B. Silvery pink.	4 00	35 00
White La France. O.R. White.....	4 00	35 00
White Maman Cochet. O.R. and B. White.....	4 00	35 00
White Mme. Caroline Testout. O.R.	4 50	40 00
William F. Dreer. B. Yellow to pink	4 50	40 00
William Notting. O.R. Rosy-cerise..	4 00	35 00
William R. Smith. O.R. and B. Cream to pink.....	4 00	35 00
Winnie Davis. O.R. Apricot-pink..	4 00	35 00

POLYANTHAS

These dwarf varieties bloom more than any other kinds. They are especially good for edging. The flowers are small and are produced in immense bunches.

Strong, two-year, No. 1, field-grown plants  
\$3.50 for 10; \$30 per 100

- Baby Dorothy. B. Pink.
- Baby Rambler. B. Red.
- Cecile Brunner. O.R. Light pink
- Erna Teschendorff. B. Crimson.
- Eugene Lamesch. B. Orange-yellow.
- George Elger. O.R. Soft yellow.
- Gruss an Aachen. O.R. Pink and salmon-yellow. A splendid variety.
- Orleans. B. Bright red; white center.

HYBRID PERPETUALS

These are the big-flowered, gorgeous Roses of the North. They bloom in June and again in the autumn; a few flower all summer. They are much hardier than the true everblooming varieties.

Strong, two-year, No. 1, field-grown plants  
\$3.50 for 10; \$30 per 100

- Alfred Colomb. B. Carmine-crimson.
- Anna de Diesbach. B. Light crimson.
- Captain Christy. O.R. Silvery pink.
- Coquette des Alpes. B. White.
- Frau Karl Druschki. B. Snow-white.
- General Jacqueminot. B. Bright-red.
- George Dickson. B. Velvety scarlet.
- Heinrich Münch. B. Soft light pink.
- His Majesty. B. Rich crimson.
- J. B. Clark. B. Light red.
- Magna Charta. O.R. and B. Glowing pink.
- Mme. Gabriel Luizet. B. Light rose-pink.
- Marshall P. Wilder. B. Deep crimson.
- Prince Camille de Rohan. B. Dark maroon.
- Paul Neyron. B. Rich rose-pink.
- Soleil d'Or. B. Orange-red and yellow.
- Ulrich Brunner. B. Light crimson.

## MOSS ROSES

We continue to grow a representative Collection of these famous, well-liked, old-time Roses. There are always inquiries for them. They bloom only once each season.

Strong, two-year, No. 1, field-grown plants  
\$3.50 for 10; \$30 per 100

**Crested Moss.** B. Bright rose, with a great mossy hood.

**Henri Martin.** B. The best red of this type.

**Salet.** B. Bright rosy pink.

**White Bath.** B. A fine white.

## RUGOSAS AND OTHERS

Strong, hedge or big-bush types. They are mostly constant-blooming and are extremely hardy.

Strong, two-year, No. 1, field-grown plants  
\$3.50 for 10; \$30 per 100

**Conrad Ferdinand Meyer.** B. Light pink.

**F. J. Grootendorst.** O.R. and B. Crimson; cluster-flowered.

**New Century.** B. Silvery pink.

**Persian Yellow.** B. Bright yellow; double flowers.

**Sir Thomas Lipton.** B. Pure white.



Dorothy Perkins Climbing Rose

## HARDY CLIMBING AND TRAILING ROSES

We have made a specialty of Hardy Climbers and our stock is strong and healthy.

We especially recommend Mary Wallace, the famous Rose from the U. S. Department of Agriculture which has made such a phenomenal success, and its three older sisters from the hand of the noted Dr. Van Fleet, Alida Lovett, Bess Lovett, and Mary Lovett. These belong to the now definitely established class of large-flowered Hardy Climbers which is so rapidly displacing the old-fashioned, bunch-flowered type, like Crimson Rambler and Dorothy Perkins.

Strictly No. 1 grade, field-grown plants at prices given. If wanted we can supply a limited number of medium-grade plants of most varieties at 30% less per plant.

<b>Alida Lovett.</b> The best large-flowered pink climber . . . . .	10	100
	\$4 50	\$40 00
<b>American Pillar.</b> Great trusses of pink flowers with white centers . . . . .	2 50	20 00
<b>Aviateur Bleriot.</b> Pale yellow . . . . .	3 50	30 00
<b>Bess Lovett.</b> Brilliant crimson; fine large flowers . . . . .	3 50	30 00
<b>Christine Wright.</b> Pink; large flowered; early . . . . .	3 50	30 00
<b>Climbing American Beauty.</b> Same color and fragrance as the popular American Beauty . . . . .	3 00	28 00
<b>Climbing Gruss an Teplitz.</b> Dazzling crimson . . . . .	3 00	28 00
<b>Dorothy Perkins.</b> Shell-pink blooms in clusters . . . . .	2 50	20 00
<b>Dr. W. Van Fleet.</b> One of the finest very light pink climbers . . . . .	3 50	30 00
<b>Ernst Grandpierre.</b> Like the popular variety, Dr. W. Van Fleet, but glistening white . . . . .	4 50	40 00
<b>Excelsa.</b> Frequently called an improved Crimson Rambler . . . . .	2 50	20 00
<b>Flower of Fairfield.</b> The everblooming Crimson Rambler . . . . .	3 00	28 00
<b>Gardenia.</b> Lemon-yellow . . . . .	3 00	28 00
<b>Gloire de Dijon.</b> Fawn, tinted salmon. A little tender . . . . .	3 00	28 00
<b>Heart of Gold.</b> Crimson, shading to white at center . . . . .	3 00	28 00
<b>Lady Gay.</b> Very similar to Dorothy Perkins . . . . .	2 50	20 00
<b>Mary Lovett.</b> The best of all white, large-flowering varieties . . . . .	4 50	40 00
<b>Mary Wallace.</b> A large-flowered luminous pink variety . . . . .	4 50	40 00
<b>Paul's Scarlet Climber.</b> Simply gorgeous glowing scarlet . . . . .	3 00	28 00
<b>Pillar of Gold.</b> One of the best yellow-flowered sorts . . . . .	3 50	30 00
<b>Purity.</b> Pure white; very large flowers . . . . .	4 00	35 00
<b>Roserie.</b> Shades of pink . . . . .	3 50	30 00
<b>Silver Moon.</b> Semi-double; silver-white . . . . .	3 00	28 00
<b>Source d'Or.</b> Bright yellow buds and creamy flowers . . . . .	3 00	28 00
<b>Tausendschön.</b> From light to dark pink . . . . .	3 50	30 00
<b>White Dorothy.</b> Similar to Dorothy Perkins, except color . . . . .	3 00	25 00
<b>Wichuraiana.</b> The Memorial Rose . . . . .	2 50	20 00





## HARDY SHRUBS DECIDUOUS AND EVERGREEN

The lack of adequate planting about the homes in cities, and in small towns especially, is pitiable. There is a crying need for good, energetic salesmanship to get these barren places planted. Hardy Shrubs, of course, are the things to sell because of their quick, easy growth and their extreme beauty of flower, form, and foliage.

Our stock is exceptionally well chosen and is strictly first grade. This list includes only those items which we carry in great quantity. We grow many other plants of this type in smaller quantities, and we will gladly quote prices on such items as you may need.

<b>ACER palmatum (polymorphum).</b>	10	100	
<i>Green Japanese Maple.</i>			
2 to 3 ft. B&B.....	\$20	00	
3 to 4 ft. B&B.....	25	00	
<b>Palmatum atropurpureum. Japa-</b>			
<i>nese Blood-leaf Maple.</i>			
12 to 18 in. B&B.....	25	00	
18 to 24 in. B&B.....	35	00	
2 to 2½ ft. B&B.....	50	00	
2½ to 3 ft. B&B.....	70	00	

NOTE.—These Japanese Maples, though not grafted trees, are of extra-good color

<b>ALTHEA.</b> See <i>Hibiscus syriacus.</i>			
<b>AMYGDALUS nana. Double Pink-</b>			
<i>flowering Almond.</i>			
2 to 3 ft.....	4	50	\$40 00
3 to 4 ft.....	6	00	50 00

This is especially fine stock

<b>AZALEA amcena. Japanese Azalea.</b>			
9 to 12 in. B&B.....	12	50	110 00
12 to 15 in. B&B.....	15	00	135 00
<b>Hinodigiri. Red Japanese Azalea.</b>			
6 to 9 in. B&B.....	9	00	80 00
9 to 12 in. B&B.....	12	50	110 00
12 to 15 in. B&B.....	17	50	160 00
15 to 18 in. B&B.....	27	50	

<b>Azalea, J. T. Lovett.</b> An exceedingly	10	100	
valuable variety with evergreen foliage and brilliant pink flowers as large as those of the <i>Indica</i> varieties.			
9 to 12 in. B&B.....	\$16	50	\$150 00
12 to 15 in. B&B.....	22	50	200 00
15 to 18 in. B&B.....	35	00	
<b>Indica alba (ledifolia alba).</b> Large			
white flowers.			
12 to 18 in. B&B.....	20	00	175 00
18 to 24 in. B&B.....	35	00	
<b>Viscosa. Swamp Azalea.</b> 2 to 3 ft.	20	00	175 00
3 to 4 ft.....	25	00	225 00

**BERBERIS Thunbergi.** Our block of 250,000 *Berberis* is as fine as it is possible to grow. We have never seen a better stock of this tremendously useful and popular hedge and border plant. There is room on many a city street for the whole quarter million of our stock. Sell *Berberis*. Nothing will give your customers greater satisfaction with so much ease and so little expense. All are 3-yr., transplanted, extra bushy plants.

	10	100	
9 to 12 in.....	\$50	per 1,000..	\$0 90 \$6 00
12 to 18 in.....	\$60	per 1,000..	1 00 7 00
18 to 24 in.....	\$120	per 1,000..	1 75 14 00
2 to 2½ ft....	\$200	per 1,000..	2 75 22 00

## DECIDUOUS AND EVERGREEN SHRUBS, continued

<i>Berberis Thunbergi</i> minor. <i>Box-Berry</i> . Transplanted; bushy.	10	100
12 to 15 in.....	\$2 50	\$20 00
15 to 18 in.....	3 00	25 00
18 to 24 in.....	4 00	35 00
2 to 2½ ft.....	6 00	
<b>BUDDLEIA</b> <i>magnifica</i> . <i>Butterfly</i> <i>Sbrub.</i> Heavy 2-yr. plants.		
2 to 3 ft.....	\$175 per 1,000..	2 50 20 00
3 to 4 ft.....	\$225 per 1,000..	3 00 25 00
<b>BUXUS</b> <i>sempervirens</i> . <i>Boxwood</i> .		
9 to 12 in.....	7 50	60 00
12 to 15 in.....	10 00	80 00
15 to 18 in.....	12 50	110 00
<i>Suffruticosa</i> . <i>Dwarf Box</i> . 5-yr., extra bushy.		
4 to 6 in....	\$150 per 1,000..	2 00 18 00
6 to 8 in....	\$225 per 1,000..	3 00 25 00
8 to 10 in.....	5 00	45 00
<b>CALICARPA</b> <i>purpurea</i> . <i>Chinese</i> <i>Beauty Berry</i> . 18 to 24 in....	3 00	25 00
2 to 3 ft.....	3 50	30 00
<b>CALYCANTHUS</b> <i>floridus</i> . <i>Sweet</i> <i>Sbrub</i> . 12 to 18 in.....	2 50	20 00
18 to 24 in.....	3 50	30 00
<b>CLETHRA</b> <i>alnifolia</i> . <i>Sweet Pepper</i> <i>Bush</i> . 18 to 24 in.....	3 00	25 00
2 to 3 ft.....	4 00	35 00
<b>CORNUS</b> <i>alba sibirica</i> . <i>Red-barked</i> <i>Dogwood</i> . 2 to 3 ft.....	2 50	20 00
3 to 4 ft.....	3 00	25 00
<i>Paniculata</i> . <i>Gray Dogwood</i> .		
2 to 3 ft.....	3 00	25 00
3 to 4 ft.....	4 00	35 00
<i>Stolonifera lutea</i> . <i>Golden-barked</i> <i>Dogwood</i> . 2 to 3 ft.....	2 50	20 00
3 to 4 ft.....	3 00	25 00

## DEUTZIAS

Although they have been grown for years to a limited extent, knowledge and appreciation of Deutzias have advanced slowly. They are certainly among the most beautiful of shrubs, blooming in miraculous profusion, and they are graceful, clean foliaged plants when not in flower.

There's lots of room in the world for Deutzias. Let us help fill it.

<b>DEUTZIA</b> <i>candidissima</i> . <i>Snowflake</i> <i>Deutzia</i> . 2 to 3 ft.....	10	100
3 to 4 ft.....	\$2 00	\$16 00
<i>Crenata</i> fl.-pl. <i>Double Pink</i> <i>Deutzia</i> .	2 50	22 00
2 to 3 ft.....	\$140 per 1,000..	2 00 16 00
3 to 4 ft.....	\$180 per 1,000..	2 50 22 00
4 to 5 ft.....	4 00	35 00
<i>Gracilis</i> . <i>Slender Deutzia</i> .		
12 to 18 in.....	2 50	22 00
<i>Lemoinei</i> . <i>Lemoine's Deutzia</i> .		
12 to 18 in.....	2 20	18 00
<i>Pride of Rochester</i> . <i>Large-flow-ered Deutzia</i> .		
2 to 3 ft.....	\$140 per 1,000..	2 00 16 00
3 to 4 ft.....	\$180 per 1,000..	2 50 22 00
4 to 5 ft.....	4 00	35 00
<i>Watereri</i> . <i>Waterer's Deutzia</i> .		
2 to 3 ft.....	2 00	16 00
3 to 4 ft.....	2 50	22 00

<b>EXCHORDA</b> <i>grandiflora</i> . <i>Pearl Bush</i> .	10	
2 to 3 ft.....	\$3 50	
3 to 4 ft.....	4 00	
4 to 5 ft.....	5 00	
5 to 6 ft.....	7 50	

## FORSYTHIAS

We do not believe any shrubs are more appreciated than Forsythias, with their early, spring cheer—the very first of the common shrubs to break definitely through the bonds of winter.

Use them as strong points in landscape planting, in bold corner masses, as specimens. Everybody likes them and wants them.

<b>FORSYTHIA</b> <i>Fortunei</i> .	10	100
18 to 24 in....	\$100 per 1,000..	\$1 50 \$12 00
2 to 3 ft.....	\$125 per 1,000..	2 00 15 00
3 to 4 ft.....	\$175 per 1,000..	2 50 20 00
<i>Intermedia</i> .		
18 to 24 in....	\$100 per 1,000..	1 50 12 00
2 to 3 ft.....	\$125 per 1,000..	2 00 15 00
3 to 4 ft.....	\$175 per 1,000..	2 50 20 00
<i>Viridissima</i> .		
18 to 24 in....	\$100 per 1,000..	1 50 12 00
2 to 3 ft.....	\$125 per 1,000..	2 00 15 00
3 to 4 ft.....	\$175 per 1,000..	2 50 20 00

*These Forsythias are certainly fine and we have a large supply of them*

<b>HIBISCUS</b> <i>syriacus</i> ( <i>Althæa</i> ). In good assortment of varieties.		
18 to 24 in.....	2 00	16 00
2 to 3 ft.....	2 50	20 00
3 to 4 ft.....	3 50	30 00

## HYDRANGEAS

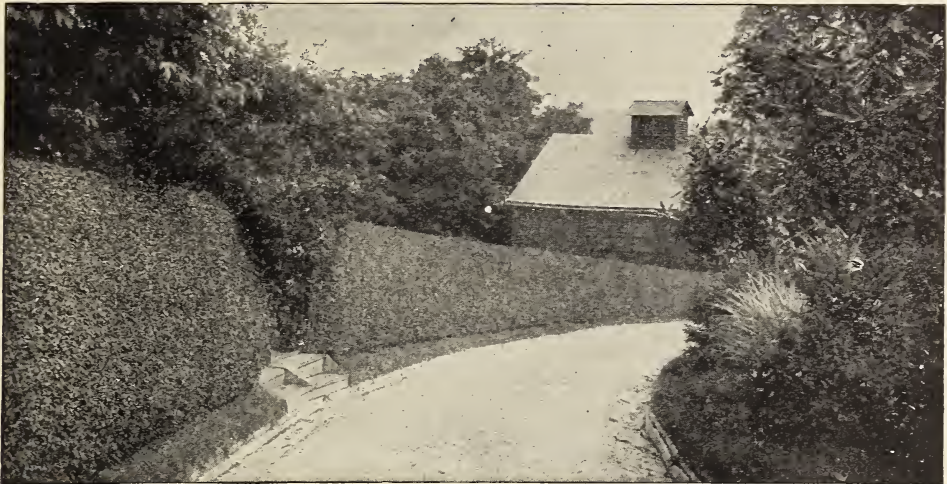
In spite of the millions of Hydrangeas P. G. which have been planted over the world, there is still an insatiable demand for them. Our stock is extensive and good. But there are other Hydrangeas less common, and much more beautiful. Try a lot of *Arborescens*, or just the straight *Paniculata*. It is well to have variety. It makes good business.

<b>HYDRANGEA</b> <i>arborescens</i> <i>grandiflora</i> . 12 to 18 in.....	10	100
18 to 24 in.....	\$2 50	\$20 00
2 to 3 ft.....	3 50	30 00
<i>Paniculata</i> . Single. 2 to 3 ft.....	4 50	40 00
3 to 4 ft.....	3 50	30 00
<i>Paniculata grandiflora</i> .		
6 to 12 in....	\$75 per 1,000..	1 25 9 00
12 to 18 in....	\$125 per 1,000..	2 00 15 00
18 to 24 in.....	3 50	30 00
2 to 3 ft.....	4 50	40 00
3 to 4 ft.....	5 50	50 00
<i>Mme. Chautard</i> . 2-yr. field grown	7 00	60 00
<i>Otaksa</i> . 2-yr. field-grown	7 00	60 00
<i>E. G. Hill</i> . 2-yr. field-grown	7 00	60 00
<i>Maurice Hamar</i> . 2-yr. field-grown	7 00	60 00

All our Hydrangeas (even the smaller grades) are extra bushy and fine

<b>LEUCOTHOE</b> <i>Catesbæi</i> . <i>Drooping</i> <i>Leucothoe</i> . 12 to 15 in.....	10 00	80 00
15 to 18 in.....	12 50	100 00

**KALMIA LATIFOLIA**. *Mountain Laurel*. We have an almost inexhaustible supply of splendid bushy specimens. Write for prices on carload lots.



Privet Hedge

DECIDUOUS AND EVERGREEN SHRUBS, continued

**Ligustrum • The Privets**

All good hedge plants. We grow them in immense quantities.

**Ibodium Privet**

**The Sensational New Hardy Privet**

This is new. A blending of the habit and attractive foliage of the common California Privet with the greater hardiness of *Ligustrum Ibota*. Very desirable for all purposes, and especially where winters are severe. Try it for general all-round satisfaction where California Privet is damaged by the winter. It is good stuff.

	10	100
12 to 18 in. . . . .	\$70 per 1,000..	\$1 00 \$3 00
18 to 24 in. . . . .	\$80 per 1,000..	1 50 9 00
2 to 3 ft. . . . .	\$120 per 1,000..	2 00 13 50
3 to 4 ft. . . . .	\$175 per 1,000..	2 50 20 00

**CALIFORNIA PRIVET**

We have probably the largest supply in the world

<b>LIGUSTRUM ovalifolium, Cali-</b>	10	100
<i>fornia Privet.</i>		
1-yr., 12 to 18 in. . . . .	\$15.00 per 1,000..	\$0 30 \$2 00
1-yr., 18 to 24 in. . . . .	\$25 per 1,000..	40 3 00
1-yr., 2 to 3 ft. . . . .	\$35 per 1,000..	60 4 50
2-yr., extra bushy—		
9 to 12 in. . . . .	\$15 per 1,000..	30 2 00
12 to 18 in. . . . .	\$22.50 per 1,000..	35 2 50
18 to 24 in. . . . .	\$30 per 1,000..	50 3 50
2 to 3 ft. . . . .	\$45 per 1,000..	70 5 00
3 to 4 ft. . . . .	\$60 per 1,000..	90 7 00
9-yr., extra bushy specimens—		
5 to 6 ft. . . . .	22 50	200 00
6 to 8 ft. . . . .	30 00	275 00
Globe or Ball—		
12 to 18 in. . . . .	9 00	75 00
18 to 24 in. . . . .	15 00	125 00
2 to 2½ ft. . . . .	22 50	200 00

<b>LIGUSTRUM Amurense. Hardy</b>	10	100
<i>Amoor River North Privet.</i>		
12 to 18 in. . . . .	\$50 per 1,000..	\$0 75 \$6 00
18 to 24 in. . . . .	\$70 per 1,000..	1 00 8 00
2 to 3 ft. . . . .	\$90 per 1,000..	1 50 10 00
3 to 4 ft., extra heavy. . . . .	2 00	15 00
4 to 5 ft., extra heavy. . . . .	3 00	25 00
<b>Ibota. Ibota Privet.</b>		
18 to 24 in. . . . .	1 00	8 00
2 to 3 ft. . . . .	1 50	10 00
<b>Regelianum. Regal Privet. True spreading type.</b>		
18 to 24 in. . . . .	1 50	12 00
2 to 3 ft. . . . .	2 50	17 50
3 to 4 ft. . . . .	3 50	25 00

**Lonicera • Honeysuckle**

The variable forms and the exquisite delicacy of flowers, foliage, and fruits of the many species of *Lonicera* are never-ending wonders. Often the shrubs are overlooked because they are confused with the common Honeysuckle vine; but they deserve to be much better known and to be pushed vigorously.

<b>LONICERA bella albida. White</b>	10	100
<i>Belle Honeysuckle. 4 to 5 ft.</i>	\$4 00	\$30 00
<b>Fragrantissima. Fragrant Bush Honeysuckle.</b>		
2 to 3 ft. . . . .	\$175 per 1,000..	3 00 20 00
3 to 4 ft. . . . .	3 50	25 00
<b>Halliana. See Vines.</b>		
<b>Morrowi. Morrow Honeysuckle.</b>		
2 to 3 ft. . . . .	\$160 per 1,000..	2 00 18 00
3 to 4 ft. . . . .	\$200 per 1,000..	3 50 25 00
4 to 5 ft. . . . .	\$300 per 1,000..	4 50 35 00
<b>Tartarica alba. White Tartarian Honeysuckle.</b>		
2 to 3 ft. . . . .	2 00	16 00
3 to 4 ft. . . . .	3 50	25 00
<b>Tartarica rosea. Pink Tartarian Honeysuckle. 2 to 3 ft.</b>		
3 to 4 ft. . . . .	2 00	16 00
	3 50	25 00

## DECIDUOUS AND EVERGREEN SHRUBS, continued

## Philadelphus

Any enterprising nurseryman can capitalize the sentimental value of the old-fashioned "Sweet Syringa" and sell great quantities of them. And he would be perfectly justified because of their handsome growth, great utility for masses and screens as well as the beauty and fragrance of their flowers. We have a splendid stock of *Philadelphus coronarius* and other valuable sorts.

PHILADELPHUS *coronarius*. Sweet

	10	100
<i>Mock Orange</i> .		
2 to 3 ft. . . . .	\$135 per 1,000..	\$2 00 \$15 00
3 to 4 ft. . . . .	\$175 per 1,000..	2 50 20 00
4 to 5 ft. . . . .	\$250 per 1,000..	3 50 30 00
<i>Coronarius aureus</i> . <i>Golden-leaf</i>		
<i>Mock Orange</i> . 12 to 18 in. . . . .	3 50	25 00
<i>Coronarius grandiflorus</i> . <i>Large-flowered Mock Orange</i> .		
2 to 3 ft. . . . .	\$135 per 1,000..	2 00 15 00
3 to 4 ft. . . . .	\$175 per 1,000..	2 50 20 00
4 to 5 ft. . . . .	\$250 per 1,000..	3 50 30 00
<i>Gordonianus</i> . <i>Gordon Mock Orange</i> .		
3 to 4 ft. . . . .	2 50	20 00
4 to 5 ft. . . . .	3 50	30 00
<i>Zeyheri</i> . <i>Zeyher Mock Orange</i> .		
3 to 4 ft. . . . .	3 00	22 00
4 to 5 ft. . . . .	3 50	30 00
5 to 6 ft. . . . .	4 50	40 00

**RHODODENDRON MAXIMUM.** We believe our source of supply for this variety cannot be excelled. We are prepared to quote most attractive prices on carload lots. Please advise us as to your requirements.

	10	100
<i>RHUS typhina laciniata</i> . <i>Cut-leaf</i>		
<i>Stag-born Sumach</i> . 2 to 3 ft. . . . .	\$2 50	\$20 00
3 to 4 ft. . . . .	3 50	30 00
4 to 5 ft. . . . .	4 50	40 00
5 to 6 ft. . . . .	5 50	50 00

	10	100
<i>ROSA multiflora japonica</i> . <i>Japanese Rose</i> .		
18 to 24 in. . . . .	\$125 per 1,000..	2 00 15 00
2 to 3 ft. . . . .	\$150 per 1,000..	2 50 20 00
3 to 4 ft. . . . .	\$175 per 1,000..	3 00 25 00
<i>Rugosa</i> . <i>Red Rugosa Rose</i> .		
12 to 18 in. . . . .	\$125 per 1,000..	2 00 15 00
18 to 24 in. . . . .	\$150 per 1,000..	2 50 18 00
<i>Rugosa alba</i> . <i>White Rugosa Rose</i> .		
12 to 18 in. . . . .	3 00	25 00
18 to 24 in. . . . .	3 50	30 00

	10	100
<i>SALIX rosmarinifolia</i> . <i>Rosemary Willow</i> . 4 to 5 ft. . . . .	3 50	30 00
5 to 6 ft. . . . .	4 50	40 00

	10	100
<i>SAMBUCUS aureus</i> . <i>Golden Elder</i> .		
18 to 24 in. . . . .	2 00	15 00
2 to 3 ft. . . . .	3 00	25 00
3 to 4 ft. . . . .	4 00	35 00

	10	100
<i>SPIRÆA</i> , Anthony Waterer. <i>Waterer Spirea</i> . 12 to 15 in. . . . .	1 75	14 00
15 to 18 in. . . . .	2 00	16 00
18 to 24 in. . . . .	2 50	22 00
2 to 2½ ft. . . . .	3 50	30 00
<i>Arguta</i> . <i>Garland Spirea</i> .		
12 to 18 in. . . . .	\$125 per 1,000..	2 00 15 00
18 to 24 in. . . . .	\$150 per 1,000..	2 50 20 00
<i>Billardi</i> . <i>Billard Spirea</i> . Pink.		
2 to 3 ft. . . . .	2 00	18 00
3 to 4 ft. . . . .	3 00	25 00

	10	100
<i>Spiræa Billardi alba</i> . <i>Billard Spirea</i> .		
White.		
18 to 24 in. . . . .	\$100 per 1,000..	\$1 50 \$12 00
2 to 3 ft. . . . .	\$125 per 1,000..	2 00 15 00
<i>Bumalda</i> . <i>Bumalda Spirea</i> .		
18 to 24 in. . . . .	3 00	25 00
2 to 2½ ft. . . . .	3 50	30 00
<i>Callosa alba</i> ( <i>japonica</i> ). <i>White Japanese Spirea</i> . 9 to 12 in. . . . .	2 00	15 00
12 to 18 in. . . . .	2 50	18 00
18 to 24 in. . . . .	3 00	25 00
<i>Froebeli</i> . <i>Froebel Spirea</i> .		
12 to 18 in. . . . .	1 50	12 00
18 to 24 in. . . . .	2 00	16 00
2 to 2½ ft. . . . .	2 50	22 00
2½ to 3 ft. . . . .	3 50	30 00
<i>Opulifolia</i> . <i>Ninebark</i> . 3 to 4 ft. . . . .	2 50	22 00
4 to 5 ft. . . . .	3 50	30 00
5 to 6 ft. . . . .	4 50	40 00
<i>Opulifolia aurea</i> . <i>Gold-leaf Ninebark</i> . 2 to 3 ft. . . . .	2 00	18 00
3 to 4 ft. . . . .	3 00	25 00
4 to 5 ft. . . . .	3 50	30 00
<i>Prunifolia fl.-pl.</i> <i>Eridal Wreath</i> .		
2 to 3 ft. . . . .	3 00	25 00
3 to 4 ft. . . . .	4 00	35 00
<i>Reevesiana fl.-pl.</i> <i>Reeves Spirea</i> .		
12 to 18 in. . . . .	1 60	14 00
18 to 24 in. . . . .	2 25	18 00
<i>Thunbergi</i> . <i>Thunberg Spirea</i> .		
12 to 18 in. . . . .	1 75	15 00
18 to 24 in. . . . .	2 00	18 00
<i>Van Houttei</i> . <i>Van Houtte Spirea</i> .		
We have an unusually fine lot of Van Houttei this season, and everybody knows what an easy-selling, useful, and popular plant it is.		
18 to 24 in. . . . .	\$100 per 1,000..	1 50 12 00
2 to 3 ft. . . . .	\$150 per 1,000..	2 00 18 00
3 to 4 ft. . . . .	\$200 per 1,000..	2 50 22 00
4 to 5 ft. . . . .	3 50	30 00
<i>STEPHANANDRA flexuosa</i> . <i>Cut-leaf Stephanandra</i> . 18 to 24 in. . . . .	2 50	20 00
2 to 3 ft. . . . .	3 50	30 00
<i>SYMPHORICARPOS racemosus</i> . <i>Snowberry</i> . 18 to 24 in. . . . .	2 00	15 00
2 to 3 ft. . . . .	2 50	20 00
3 to 4 ft. . . . .	3 50	30 00
<i>Vulgaris</i> . <i>Coral Berry</i> . 18 to 24 in. . . . .	1 50	10 00
2 to 3 ft. . . . .	2 00	15 00
<i>SYRINGA vulgaris</i> . <i>Purple Lilac</i> .		
18 to 24 in. . . . .	2 50	18 00
2 to 3 ft. . . . .	3 00	25 00
3 to 4 ft. . . . .	3 50	30 00
<i>Vulgaris alba</i> . <i>White Lilac</i> .		
18 to 24 in. . . . .	3 50	30 00
2 to 3 ft. . . . .	4 50	40 00
<i>TAMARIX africana</i> . <i>African Tamarix</i> . 2 to 3 ft. . . . .	2 00	15 00
3 to 4 ft. . . . .	2 50	20 00
4 to 5 ft. . . . .	3 00	25 00
5 to 6 ft. . . . .	4 00	35 00
<i>VIBURNUM lentago</i> . <i>Nannyberry</i> .		
3 to 4 ft. . . . .	5 00	45 00
4 to 5 ft. . . . .	7 00	60 00
<i>Opulus sterile</i> . <i>Common Snowball</i> .		
12 to 18 in. . . . .	2 50	
18 to 24 in. . . . .	3 50	
<i>Plicatum</i> . <i>Japanese Snowball</i> .		
15 to 18 in. . . . .	3 00	
18 to 24 in. . . . .	4 00	



Shrubs and Vines

**Weigela**

The Weigelas are just beginning to be appreciated. There is scarcely any flowering shrub more valuable for cutting or more suited to large, dignified masses. They are still far from common, and yet are sufficiently well liked and known to sell easily and well.

<b>WEIGELA amabilis.</b> <i>Rose Weigela.</i>	10	100
18 to 24 in.....	\$2 00	\$15 00
2 to 3 ft.....	\$175 per 1,000..	2 50 20 00
3 to 4 ft.....	\$250 per 1,000..	3 50 30 00
4 to 5 ft.....		4 50 40 00
<b>Candida.</b> <i>White Weigela.</i> 2 to 3 ft.	3 50	30 00
3 to 4 ft.....	4 00	35 00
<b>Desboisi.</b> <i>Deep Pink Weigela.</i>		
2 to 3 ft.....	3 00	25 00
3 to 4 ft.....	3 50	30 00

<b>Weigela, Eva Rathke.</b> <i>Red-flowered</i>	10	100
<i>Weigela.</i> 12 to 18 in.....	\$2 50	\$20 00
18 to 24 in.....	3 50	30 00
2 to 3 ft.....	4 50	40 00
<b>Gordonianus.</b> <i>Gordon's Weigela.</i>		
Pink. 3 to 4 ft.....	3 50	30 00
4 to 5 ft.....	4 50	40 00
<b>Hendersoni.</b> <i>Henderson Weigela.</i>		
Pink. 2 to 3 ft.....	2 50	20 00
3 to 4 ft.....	\$250 per 1,000..	3 50 30 00
4 to 5 ft.....	\$300 per 1,000..	4 50 40 00
<b>Rosea.</b> <i>Rose-Pink Weigela.</i>		
2 to 3 ft.....	\$160 per 1,000..	2 00 18 00
3 to 4 ft.....	\$200 per 1,000..	3 00 25 00
4 to 5 ft.....		4 00 35 00
<b>YUCCA filamentosa.</b> <i>Spanish Bay-</i>		
<i>onet.</i> Strong plants.....	2 00	15 00

**HARDY VINES AND CREEPERS**

Think of the thousands of factory walls, the chimneys, the rows of bare houses in the cities that are crying out for Boston Ivy to clothe their nakedness! Think of the thousands of porches and pergolas, the verandas and balconies that need myriads of honeysuckle, wistaria, and clematis to make them habitable! The market is ready. We have the stock. Let's go!

<b>AMPELOPSIS Engelmanni.</b> <i>Engle-</i>	10	100
<i>mann Creeper.</i> 3-yr.....	\$2 50	\$20 00
<b>Quinquefolia.</b> <i>Virginia Creeper.</i>		
3-yr.....	2 00	16 00
<b>Veitchi.</b> <i>Boston Ivy.</i> This is the finest and most popular vine for covering buildings and walls. Our stock is good and we have lots of it.		
1-yr., sel. seedgs. \$75 per 1,000..	1 20	9 00
2-yr., 12 to 18 in.....	3 00	25 00
2-yr., 18 to 24 in.....	3 50	30 00
2-yr., 2 to 3 ft.....	4 00	35 00
<b>CLEMATIS Henri</b> (white), Jack-		
mani (purple), Mme. Baron		
Veillard (lilac), Mme. Edouard		
Andre (rosy carmine). Any of these large-flowered Clematis in heavy, 2-year-old, field-grown plants.....	4 50	40 00

<b>Clematis paniculata.</b> <i>Sweet Autumn</i>	10	100
<i>Clematis.</i>		
2-yr., strong.....	\$2 50	\$20 00
<b>HEDERA helix.</b> <i>English Ivy.</i>		
From 3½-inch pots.....	2 00	18 00
<b>JASMINUM nudiflorum.</b> <i>Winter</i>		
<i>Jasmine.</i> 18 to 24 in.....	2 50	20 00
<b>LONICERA Halliana.</b> <i>Japanese</i>		
<i>Evergreen Honeysuckle.</i>		
2-yr., selected.. \$135 per 1,000..	2 00	15 00
<b>Japonica (brachypoda).</b> <i>Japanese</i>		
<i>Honeysuckle.</i> 2-yr.....	2 00	15 00
<b>PUERARIA Thunbergiana.</b> <i>Kudzu</i>		
<i>Vine.</i> Extra selected.....	2 00	15 00
<b>VINCA Minor.</b> <i>Periwinkle</i> (Evergreen).		
Extra fine, from 3½ inch pots	1 50	12 00
<b>WISTERIA sinensis.</b> <i>Chinese Purple</i>		
<i>Wisteria.</i> 2-yr., selected.....	3 00	25 00



## EVERGREEN TREES

Landscape architects and the landscape departments of most nurseries would go bankrupt, both mentally and financially, if there were no Coniferous Evergreens! They are the first resort and the last hope for all groupings and formal plantings, especially when quick, home-like effects are desired. The demand for them is enormous and insatiable, and few things are more profitable if properly handled.

Our trees are well-grown, frequently transplanted to insure good roots, and are shipped with balls of earth encased in burlap.

*Write for prices of lining-out stock.*

	10	100		10	100
<b>BIOTA aurea nana.</b> 6 to 9 in. ....	\$9 00	\$80 00	<b>Juniperus Meyeri.</b> 6 to 9 in. ....	\$20 00	
9 to 12 in. ....	12 50	110 00	12 to 18 in. ....	25 00	
<b>Orientalis.</b> 18 to 24 in. ....	9 00	80 00	18 to 24 in. ....	35 00	
2 to 3 ft. ....	15 00	125 00	<b>Prostrata (horizontalis).</b>		
3 to 4 ft. ....	27 50	250 00	9 to 12-in. spread. ....	10 00	\$90 00
4 to 5 ft. ....	37 50	350 00	12 to 18-in. spread. ....	13 50	125 00
<b>Rosedale.</b> 9 to 12 in. ....	7 50		<b>PICEA excelsa.</b> 9 to 12 in. ....	4 50	40 00
12 to 15 in. ....	10 00		12 to 18 in. ....	7 00	60 00
<b>JUNIPERUS canadensis.</b>			18 to 24 in. ....	9 00	80 00
2½ to 3 ft. ....	30 00		<b>Orientalis.</b> 18 to 24 in. ....	12 50	
3 to 3½ ft. ....	40 00		2 to 3 ft. ....	25 00	
<b>Chinensis pfitzeriana.</b>			<b>Pungens.</b> 18 to 24 in. ....	20 00	
9 to 12-in. spread. ....	12 50	110 00	2 to 2½ ft. ....	30 00	
12 to 18-in. spread. ....	15 00	140 00	2½ to 3 ft. ....	35 00	
18 to 24-in. spread. ....	22 50	200 00	<b>KOSTERI.</b> We have a splendid supply of large specimen trees of this most beautiful and popular Blue Spruce, 8 to 18 feet high. Write for special prices on car-load lots.		
2 to 2½ ft. ....	30 00	275 00			
2½ to 3 ft. ....	37 50	350 00	<b>PINUS resinosa.</b> 18 to 24 in. ....	10 00	
<b>Communis aurea.</b>			2 to 2½ ft. ....	15 00	
9 to 12-in. spread. ....	10 00	90 00	<b>RETINOSPORA filifera.</b> 15 to 18 in. ....	16 50	150 00
12 to 18-in. spread. ....	13 50	125 00	18 to 24 in. ....	20 00	190 00
18 to 24-in. spread. ....	17 50		2 to 2½ ft. ....	25 00	
<b>Communis hibernica.</b> 12 to 18 in. ....	8 00	75 00	2½ to 3 ft. ....	30 00	
<b>Excelsa stricta.</b> 6 to 9 in. ....	8 00	75 00	3 to 4 ft. ....	40 00	
9 to 12 in. ....	11 00	100 00			
12 to 15 in. ....	13 50	125 00			
<b>Hudsoniana.</b> 12 to 18-in. spread. ....	13 50	125 00			
18 to 24-in. spread. ....	20 00	175 00			
2 to 3-ft. spread. ....	30 00				

EVERGREEN TREES, continued

<i>Retinospora filifera aurea.</i>	10	100	<i>Thuja occidentalis Douglasi aurea.</i>	10	100
9 to 12-in. spread.....	\$15 00	\$140 00	12 to 18 in.....	\$15 00	
12 to 15-in. spread.....	17 50	165 00	18 to 24 in.....	17 50	
15 to 18-in. spread.....	25 00		2 to 2½ ft.....	25 00	
18 to 24-in. spread.....	35 00		<i>Occidentalis elegantissima.</i>		
<i>Obtusa Crippsi.</i> 12 to 18 in.....	20 00		9 to 12 in.....	10 00	\$90 00
18 to 24 in.....	25 00		12 to 18 in.....	12 50	110 00
<i>Obtusa gracilis.</i> 12 to 15 in.....	20 00	175 00	18 to 24 in.....	17 50	
15 to 18 in.....	25 00	225 00	2 to 3 ft.....	25 00	
18 to 24 in.....	30 00	275 00	<i>Occidentalis Ellwangeriana.</i>		
2 to 2½ ft.....	37 50	350 00	12 to 15 in.....	11 50	100 00
<i>obtusa magnifica.</i> 18 to 24 in.....	25 00		15 to 18 in.....	15 00	135 00
2 to 2½ ft.....	30 00		18 to 24 in.....	20 00	
2½ to 3 ft.....	35 00		<i>Occidentalis globosa.</i> 9 to 12 in..	9 00	80 00
3 to 4 ft.....	45 00		12 to 15 in.....	12 50	115 00
4 to 5 ft.....	60 00		<i>Occidentalis Hoveyi.</i> 12 to 15 in..	10 00	90 00
<i>obtusa nana.</i> 9 to 12 in.....	30 00		15 to 18 in.....	13 50	125 00
12 to 15 in.....	45 00		18 to 24 in.....	17 50	160 00
<i>Pisifera.</i> 12 to 18 in.....	12 50	115 00	<i>Occidentalis lutea. George Pea-</i>		
18 to 24 in.....	16 50	150 00	<i>body Arborvita.</i> 12 to 18 in.....	15 00	135 00
2 to 2½ ft.....	22 50		18 to 24 in.....	17 50	160 00
2½ to 3 ft.....	30 00		<i>Occidentalis pyramidalis.</i>		
3 to 4 ft.....	37 50		12 to 18 in.....	11 00	100 00
<i>Pisifera aurea.</i> 12 to 18 in.....	13 50	125 00	18 to 24 in.....	13 50	125 00
18 to 24 in.....	17 50	160 00	2 to 2½ ft.....	18 50	175 00
2 to 2½ ft.....	25 00		2½ to 3 ft.....	21 50	200 00
2½ to 3 ft.....	30 00		3 to 4 ft.....	35 00	
3 to 4 ft.....	37 50		4 to 4½ ft.....	50 00	
<i>Plumosa.</i> 12 to 18 in.....	12 50	115 00	<i>Occidentalis Reidi.</i> 12 to 15 in..	10 00	90 00
18 to 24 in.....	16 50	150 00	15 to 18 in.....	12 50	115 00
2 to 2½ ft.....	22 50		<i>Occidentalis Rosenthalii.</i>		
2½ to 3 ft.....	30 00		15 to 18 in.....	17 50	150 00
3 to 4 ft.....	37 50		18 to 24 in.....	22 50	200 00
<i>Plumosa aurea.</i> 12 to 18 in.....	13 50	125 00	2 to 2½ ft.....	27 50	
18 to 24 in.....	17 50		2½ to 3 ft.....	32 50	
2 to 2½ ft.....	27 50	250 00	<i>Plumosa, Gold Dust.</i>		
2½ to 3 ft.....	32 50	300 00	6 to 9 in.....	10 00	90 00
<i>Plumosa, Gold Dust.</i>			9 to 12 in.....	13 50	125 00
6 to 9 in.....	10 00	90 00	12 to 18 in.....	16 50	150 00
9 to 12 in.....	13 50	125 00	18 to 24 in.....	22 50	
12 to 18 in.....	16 50	150 00	<i>Plumosa lutescens.</i>		
18 to 24 in.....	22 50		9 to 12 in.....	12 50	110 00
<i>Plumosa lutescens.</i>			12 to 15 in.....	15 00	
9 to 12 in.....	12 50	110 00	<i>Squarrosa Veitchi.</i> 9 to 12 in.....	11 00	100 00
12 to 15 in.....	15 00		12 to 18 in.....	13 50	125 00
<i>Squarrosa Veitchi.</i> 9 to 12 in.....	11 00	100 00	18 to 24 in.....	20 00	175 00
12 to 18 in.....	13 50	125 00	2 to 2½ ft.....	27 50	
18 to 24 in.....	20 00	175 00	<i>TAXUS cuspidata brevifolia.</i>		
2 to 2½ ft.....	27 50		9 to 12 in.....	11 00	100 00
<i>TAXUS cuspidata brevifolia.</i>			12 to 18 in.....	16 50	150 00
9 to 12 in.....	11 00	100 00	18 to 24 in.....	27 50	250 00
12 to 18 in.....	16 50	150 00	<i>Cuspidata Hicksi.</i> 12 to 18 in.....	30 00	
18 to 24 in.....	27 50	250 00	<i>Repandens.</i> 12 to 18-in. spread.....	15 00	
<i>Cuspidata Hicksi.</i> 12 to 18 in.....	30 00		18 to 24-in. spread.....	20 00	
<i>Repandens.</i> 12 to 18-in. spread.....	15 00		<i>THUYA occidentalis.</i> 12 to 18 in..	9 00	75 00
18 to 24-in. spread.....	20 00		18 to 24 in.....	12 50	100 00
<i>THUYA occidentalis.</i> 12 to 18 in..	9 00	75 00	2 to 3 ft.....	16 50	150 00
18 to 24 in.....	12 50	100 00	3 to 4 ft.....	27 50	250 00
2 to 3 ft.....	16 50	150 00	<i>Occidentalis, Columbia.</i>		
3 to 4 ft.....	27 50	250 00	12 to 18 in.....	17 50	
<i>Occidentalis, Columbia.</i>			18 to 24 in.....	25 00	
12 to 18 in.....	17 50		2 to 3 ft.....	35 00	
18 to 24 in.....	25 00		<i>Occidentalis compacta.</i>		
2 to 3 ft.....	35 00		9 to 12 in.....	8 00	75 00
<i>Occidentalis compacta.</i>			12 to 15 in.....	11 50	100 00
9 to 12 in.....	8 00	75 00	15 to 18 in.....	15 00	135 00
12 to 15 in.....	11 50	100 00	18 to 24 in.....	20 00	
15 to 18 in.....	15 00	135 00	<i>TSUGA canadensis.</i> 18 to 24 in..	20 00	175 00
18 to 24 in.....	20 00		2 to 2½ ft.....	25 00	235 00
<i>Occidentalis compacta.</i>			2½ to 3 ft.....	30 00	275 00
9 to 12 in.....	8 00	75 00	3 to 4 ft.....	45 00	
12 to 15 in.....	11 50	100 00	4 to 5 ft.....	60 00	
15 to 18 in.....	15 00	135 00	5 to 6 ft.....	80 00	
18 to 24 in.....	20 00		<i>TSUGA CANADENSIS.</i> Canadian Hemlock. Collected extra-selected seedlings. 12 to 18 in., \$15 per 100, \$100 per 1,000.		



Perennial Planting

## HARDY PERENNIAL PLANTS

To supply a complete line of hardy garden flowers in well-grown, well-handled plants that will give pleasure and satisfaction to customers is the most difficult department of the retail nurseryman's business. It is extremely important, therefore, to have a source of supply which is constant and can be depended upon to furnish a wide range of good stock.

We pride ourselves on the quality and diversity of the Hardy Perennials which we raise. We make a specialty of them, and how to handle them in such a way that they retain their full measure of vigor and vitality.

*Strong, field-grown plants unless otherwise noted*

ACHILLEA Ptarmica, Boule de Neige.....	10	100	ASTER alpinus superbus, Goliath....	\$1 20	10	\$10 00
2½-in. pots.....	75	6 00	Novi-belgi, Climax.....	1 20	10 00	
ALYSSUM saxatile compactum.....	1 00	8 00	2½-in. pots.....	1 00	8 00	
ÆGOPODIUM podogaria variegata.....	1 00	8 00	Novi-belgi, Feltham Blue.....	1 20	10 00	
ANCHUSA Italica, Dropmore.....	1 20	10 00	2½-in. pots.....	1 00	8 00	
2½-in. pots.....	1 00	8 00	Novi-belgi, Robert Parker.....	1 20	10 00	
Opal.....	1 20	10 00	2½-in. pots.....	1 00	8 00	
2½-in. pots.....	1 00	8 00	Novi-belgi, St. Egwin.....	1 20	10 00	
ANEMONE japonica alba, Queen Charlotte, Rosea Superba, Rubra Superba, Whirlwind.			2½-in. pots.....	1 00	8 00	
Strong plants, 2½-in. pots.....	1 20	10 00	Novæ-anglæ.....	1 00	8 00	
ANTHEMIS tinctoria.....	1 00	8 00	Novæ-anglæ rosea.....	1 20	10 00	
AQUILEGIA canadensis.....	1 00	8 00	Tataricus.....	1 00	8 00	
Chrysantha.....	1 00	8 00	ASTILBE japonica, Gladstone.....	3 50		
Cærulea.....	1 20	10 00	Peach Blossom.....	3 50		
Glandulosa.....	1 20	10 00	Queen Alexandra.....	3 50		
Long-spurred Hybrids.....	1 20	10 00	BAPTISIA australis.....	1 20	10 00	
ARABIS alba. 2½-in. pots.....	1 00	8 00	BOCCONIA cordata.....	1 20	10 00	
ARTEMISIA stelleriana.....	1 00	8 00	BOLTONIA asteroides.....	1 00	8 00	
Vulgaris lactiflora.....	1 20	10 00	Latisquama.....	1 00	8 00	
ASCLEPIAS tuberosa.....	1 20	10 00	Latisquama nana.....	1 20	10 00	
			CAMPANULA carpatica.....	1 20	10 00	
			Carpatica alba.....	1 50	12 00	
			Media. Canterbury Bells. Pink, White, Blue, and Mixed.			
			2½-in. pots.....	1 00	8 00	
			Persicifolia.....	1 20	10 00	



HARDY PERENNIAL PLANTS, continued

	10	100
CENTAUREA macrocephala.....	\$1 20	\$10 00
Montana.....	1 20	10 00
Montana alba.....	1 50	12 00
CENTRANTHUS ruber.....	1 20	10 00
CERASTIUM biebersteini.....	1 00	8 00
CLEMATIS Davidiana.....	2 00	18 00
CONVALLARIA. <i>Lily-of-the-Valley</i> .		
Extra-selected clumps.....	1 80	15 00
Strong pips.....	75	6 00
COREOPSIS lanceolata.....	90	7 00
DAISY. Alaska, California, King Edward VII, Market Favor- ite, Shasta.....	1 20	10 00
DELPHINIUM belladonna. Light blue.....	1 00	8 00
Bellamosa. Dark blue.....	1 00	8 00
Hybridum. Shades of blue.....	1 20	10 00
Sinensis. Dwarf. Dark blue.....	1 20	10 00
Sinensis alba. Dwarf. White.....	1 20	10 00
Vanderbilt Hybrids. Exceedingly fine.....	5 00	
DICENTRA spectabilis.....	4 00	
DIGITALIS gloxiniaeflora. Pink, Purple, White, and Mixed... Any of these from 2½-in. pots...	1 00 80	8 00 6 00
ECHINOPS Ritro.....	1 00	8 00

**Chrysanthemums**

All the following varieties, from 2½-in. pots  
90 cts. for 10, \$7 per 100

Chrysolora. Large-flowered golden yellow.  
Excelsior. Aster-flowered. Bright yellow.  
Jules Lagravere. Large-flowered. Deep garnet.  
L'Argentuilais. Petals deep chestnut, tipped yellow.  
Lillian Doty. Large-flowered. Beautiful shell-pink.  
Little Bob. Small button. Brownish red.  
Little Dot. Midseason. Small button. Deep bronze.  
Mitzi. Large-flowered. Yellow with reddish center.  
Model of Perfection. Pompon. Free blooming.  
White.  
Mrs. Dean Emery. Decorative. Early-flowering.  
Brilliant chamois-pink.  
Oconto. Large-flowered. White.  
October Gold. Deep orange. Large flowered.  
Old Homestead. Large-flowered. Bright rose-pink.  
Red Indian. Crushed strawberry-red over copper.  
Pompon.  
Rhoda. Midseason. Small button Pink.  
Ruth Cummings. Large-flowered. Reddish bronze.  
Skibo. Button type. Bright golden yellow.  
Soleil d'Or. Aster-flowered. Golden yellow.  
Summer Gold. Aster-flowered. Early. Golden  
yellow.  
Tints of Gold. Large-flowered. Bronze.  
Triomphe d'Or. Large-flowered. Golden yellow.  
Wanda. Aster-flowered. Pure white.  
White Doty. Large-flowered. Early. Pure white.  
White Midget. Pompon. Pure white.  
Yellow Diana. Large-flowered. Bright orange-  
yellow.

ERYNGIUM amethystinum	10	100
2½-in. pots.....	\$0 80	\$6 00
Field-grown plants.....	1 00	8 00
EUPATORIUM ageratoides.....	1 20	10 00
Cœlestinum.....	1 00	8 00
2½-in. pots.....	90	7 00
Fraseri.....	1 20	10 00

	10	100
FUNKIA cœrulea.....	\$1 20	\$10 00
Lancifolia undulata variegata.....	1 20	10 00
Sieboldiana.....	1 20	10 00
GALLARDIA grandiflora.....	1 00	8 00
2½-in. pots.....	80	6 00
GALIUM boreale.....	1 20	10 00
GYPSOPHILA paniculata.....	1 00	8 00
Paniculata fl.-pl. Grafted.....	4 00	
GRASSES, Eulalia gracillima.....	1 50	12 00
Eulalia japonica.....	1 50	12 00
Eulalia japonica variegata.....	1 50	12 00
Eulalia japonica zebrina.....	1 50	12 00
Pennisetum japonicum.....	1 20	10 00
Phalaris arundinacea picta.....	1 20	10 00
HELENIUM autumnale superbum..	1 50	12 00
Riverton Gem.....	1 50	12 00
HELLANTHEMUM croceum.....	1 20	10 00
2½-in. pots.....	1 00	8 00
HELIANTHUS maximilliana.....	1 00	8 00
Miss Mellish.....	1 00	8 00
Mollis.....	1 00	8 00
Multiflorus grandiplenus. 2½-in. pots.....	1 00	8 00
HELIOPSIS pitcheriana.....	1 00	8 00
Scabra, Excelsa.....	1 75	15 00
HEMEROCALLIS dumortieri.....	1 00	8 00
Flava.....	1 20	10 00
Florham.....	1 00	8 00
Gold Dust.....	1 00	8 00
Kwanso.....	1 00	8 00
Orangeman.....	1 00	8 00
Thunbergi.....	1 20	10 00
HESPERIS matronalis.....	1 00	8 00
HIBISCUS. Meehan's Mallow Mar- vels, selected Blood-Red, also Large Pink.....	1 75	15 00
Militaris.....	1 00	8 00
Moscheutos albus.....	1 20	10 00
Moscheutos, Crimson Eye.....	1 20	10 00
Moscheutos rosea.....	1 20	10 00
Moscheutos, Mixed Colors.....	1 00	8 00

HOLLYHOCKS. Double, Maroon, Pink, Red, Salmon, White, Yellow, separate colors.....	1 20	10 00
Double, Mixed.....	1 00	8 00
Single, Mixed.....	1 00	8 00

IBERIS. Snowflake	} Strong field- grown plants	1 20	10 00
Gibraltarica		1 20	10 00
Sempervirens		1 20	10 00

**Iris Germanica (Liberty Iris)**

A large supply of large roots.

Abd-el-kadir	Herant
Brooklyn	La Tendre
Celeste	Mrs. Chas. Wheeler
Charles Dickens	Pauline
Charlotte Patti	President Thiers
Darius	Queen of May
Delicata	Rebecca
Donna Maria	Sappho
Dr. Parnet	Sir Robert Peel
H. Cramer	

80 cts. for 10, \$6 per 100

## HARDY PERENNIAL PLANTS, continued

IRIS KAEMPFERI. <i>Japanese Iris.</i>	10	100	LYTHRUM roseum superbum.....	10	100
Double White (Gold bound).....	\$2 00		MONARDA didyma splendens.....	1 20	10 00
Peacock. Double; purple.....	1 75	\$15 00	MYOSOTIS palustris semperflorens.		
Pyramid. Double; indigo-blue.....	1 75	15 00	2½-in. pots.....	1 00	8 00
Stella. Single; violet, veined white.	1 75	15 00	PACHYSANDRA terminalis.....	1 50	12 00
Mixed. This is a splendid mixture..	1 00	8 00	Write for prices on larger quantities		
IRIS PSEUDACORUS. <i>Water Flag.</i>			PAPAVER nudicaule.....	1 20	10 00
Yellow.....	1 50	12 00	2½-in. pots.....	1 00	8 00
IRIS SIBIRICA. Blue King.....	1 00	8 00	Oriente.....	1 50	12 00
Orientalis.....	1 00	8 00	2½-in. pots.....	1 00	8 00
Snow Queen.....	1 25	10 00	PARDANTHUS sinensis (Eelam-		
IRIS PUMILA HYBRIDS. Blue Jay.			canda chinensis).....	1 20	10 00
Bright blue.....	1 25	10 00	PENTSTEMON barbatus torreyi....	1 20	10 00
Canary Bird. Bright yellow.....	1 25	10 00	Digitalis.....	1 00	8 00
Sea Gull. Gray.....	1 25	10 00			
Swan. Creamy white.....	1 25	10 00			
Mixed Varieties.....	1 00	8 00			
LATHYRUS latifolius.....	1 00	8 00			
Mary Lovett.....	1 25	10 00			
White Pearl.....	1 25	10 00			
LIATRIS pycnostachya.....	1 25	10 00			
LILIUM auratum.....	2 00	15 00			
Henryi.....	3 50	30 00			
Speciosum album.....	2 50				
Speciosum magnificum.....	2 00	15 00			
Speciosum melpomene.....	2 00	15 00			
Speciosum rubrum.....	2 00	15 00			
All our Lily bulbs are large and selected					
LOBELIA cardinalis. 3-in. pots....	1 20	10 00			
LUPINUS polyphyllus.....	1 20	10 00			
Polyphyllus albus.....	1 20	10 00			
LYCHNIS chalconica.....	1 20	10 00			
2½-in. pots.....	1 00	8 00			
Floscuculi. 2½-in. pots.....	1 00	8 00			
Field-grown plants.....	1 20	10 00			
Viscaria splendens fl.-pl.....	1 00	8 00			
LYSIMACHIA clethroides.....	1 00	8 00			

## Peonies

Selected 3- to 5-eye Roots

Albatre. Milk-white, ivory and lilac; very fragrant.	
Canari. White, flushed delicate pink.	
Couronne d'Or. Large; white. Midseason to late.	
Duc de Wellington. White guards, with sulphur center.	
Duchesse de Nemours. Pure white crown, sulphur-white collar; fragrant. Early.	
Edouard Andre. Dark carmine-violet.	
Edulis Superba. Bright rosy pink; fragrant; free bloomer.	
Festiva Maxima. Pure white, with dashes of red at center.	
Fragrans. Deep rose. Midseason.	
*Francis Ortegat. Amaranth-red; very large. Midseason.	
*L'Eclatante. Brilliant red. Midseason.	
Mme. Calot. Pale hydrangea-pink; very fragrant.	
Mme. Moutot. Tyrian-rose, tipped silver.	
See next page for prices	



Peonies. Did you ever see better ones?



Border of Hardy Phlox

**PEONIES, continued**

Modeste Guerin. Soft rose.		
*Mons. Dupont. Milk-white center, splashed crimson.		
Triomphe de l'Exposition de Lille. Hydrangea-pink, splashed violet-rose. Midseason.		
Venus. Pale pink; fragrant.		
All Peonies, except those marked (*)		
	10	100
Heavy Roots.....	\$3 50	\$30 00
Those marked (*).....	5 00	45 00

**Phlox**

**Strong Field-grown Plants**

Annie Cook	Mrs. Jenkins		
Baron von Dedem	Miss Lingard		
Bridesmaid	Pantheon		
Caran d'Ache	Pink Beauty		
Champs Elysees	Queen		
Eclairer	Rheinlander		
Fernand Cortez	Rijnstroom		
F. G. von Lassburg	R. P. Struthers		
Gen. Chanzy	Sunshine		
Independence	William Ramsey		
L'Esperance			
	\$1.20 for 10, \$10 per 100		
Elizabeth Campbell. Large; clear pink.	\$3 for 10,		
	\$25 per 100.		
Mrs. M. Von Hoboken. Large; soft pink.	\$3 for 10,		
	\$25 per 100.		
PHLOX SUBULATA. Moss Pinks.			
Alba (white), lilacina (lavender)	10	100	
and rosea (pink).....	\$1 00	\$8 00	
PHYSALIS francheti. 2½-in. pots..	1 00	8 00	
PHYSOSTEGIA virginiana.....	1 00	8 00	
Virginiana alba.....	1 00	8 00	
<b>Hardy Pinks</b>			
Abbotsford	Grenadin Red		
Arthur	Grenadin Pink		
Essex Witch	Her Majesty		
Grenadin White	Plumarius nanus fl.-pl.		
		10	100
Any of above 2½-in. pots.....	\$1 00	\$8 00	
Field-grown plants.....	1 20	10 00	
PLATYCODON grandiflorum Mariesi	1 20	10 00	
Grandiflorum Mariesi alba.....	1 20	10 00	

	10	100
PLUMBAGO Larpentæ.....	\$1 20	
2½-in. pots.....	1 00	\$8 00
POLYGONUM amplexicaule oxy-		
phyllum.....	1 00	8 00
Compactum.....	1 00	8 00
Cuspidatum.....	1 00	8 00
PRIMULA veris.....	1 20	
Vulgaris.....	1 20	
PYRETHRUM roseum hybridum...	1 20	10 00
2½-in. pots.....	1 00	8 00
Uliginosum.....	1 20	10 00
RANUNCULUS acris fl.-pl.....	1 20	10 00
RUDBECKIA laciniata fl.-pl.....	1 00	8 00
Nitida hirsuta.....	1 00	8 00
Purpurea (Echinacea purpurea)...	1 00	8 00
Subtomentosa.....	1 20	10 00
SALVIA azurea grandiflora.....	1 00	8 00
Pitcheri.....	1 20	
SANTOLINA incana.....	1 20	10 00
2½-in. pots.....	1 00	8 00
SEDUM acre. 2½-in. pots.....	1 00	8 00
Album. 2½-in. pots.....	1 00	8 00
Sarmentosum. 2½-in. pots.....	1 00	8 00
Sieboldi. 2½-in. pots.....	1 00	8 00
Spectabile, Brilliant.....	1 20	10 00
STACHYS lanata.....	1 20	10 00
STATICE latifolia.....	1 20	10 00
2½-in. pots.....	1 00	8 00
STOKESIA laevis (cyanea).....	1 20	10 00
2½-in. pots.....	1 00	8 00
Laevis alba.....	1 20	10 00
2½-in. pots.....	1 00	8 00
SWEET WILLIAM. Pink, Red,		
White, and Mixed Colors.....	1 00	8 00
THALICTRUM adiantifolium.....	1 00	8 00
TRITOMA hybrida. New.....	1 50	12 00
Pfizeri.....	1 50	12 00
VALERIANA officinalis.....	1 20	10 00
VERONICA amethystina.....	1 00	8 00
Longifolia subsessilis.....	1 20	10 00
Spicata.....	1 00	8 00
VIOLA. Gov. Herrick.....	1 20	10 00
2½-in. pots.....	1 00	8 00

## DECIDUOUS TREES

Standard shade and ornamental trees that must be carried by all nurserymen. Our stock is such that the following Deciduous trees are offered only to trade buyers who will haul them away by truck. We are not now accepting orders for Shade trees that must be packed for shipment.

<b>ACER dasycarpum.</b> <i>Silver Maple.</i>	Each	10			
6 to 8 ft.....	\$0 60	\$5 00			
8 to 10 ft.....	1 00	9 00			
10 to 12 ft.....	1 50	12 50			
15 to 20 ft., 3 to 4-in. cal.....	5 00	45 00			
15 to 20 ft., 4 to 6-in. cal.....	9 00	80 00			
<b>Platanoides.</b> <i>Norway Maple.</i>					
12 to 15 ft., 2 to 2½-in. cal....	5 00	45 00			
12 to 15 ft., 2½ to 3-in. cal....	6 00	50 00			
3 to 4-in. cal.....	9 00	80 00			
4 to 5-in. cal.....	13 50	125 00			
<b>Platanoides globosum.</b> <i>Globe-headed Norway Maple.</i>					
6 to 7-ft. stems, 8-yr. heads....	9 00	80 00			
<b>Platanoides Schwedleri.</b> <i>Purple-leaved Norway Maple.</i>					
12 to 15 ft., 1½ to 2-in. cal....	4 50	40 00			
12 to 15 ft., 2 to 2½-in. cal....	6 00	50 00			
<b>Saccharum.</b> <i>Sugar Maple.</i>					
8 to 10 ft.....	2 00	17 50			
<b>CATALPA Bungei.</b> <i>Umbrella Tree.</i>					
Splendid 1-yr. heads.....	1 50	12 50			
3-yr. heads, extra fine.....	2 00	17 50			
<b>CERASUS japonica rosea pendula.</b> <i>Weeping Japanese Cherry.</i>					
5 to 6-ft. stems, sel. 1-yr. heads.	3 00	25 00			
3-yr. heads.....	10 00	90 00			
<b>CORNUS florida.</b> <i>White-flowered Dogwood.</i>					
8 to 10 ft.....	3 50	30 00			
10 to 12 ft.....	6 00	50 00			
<b>CRATÆGUS oxyacantha.</b> <i>Paul's Scarlet Hawthorn.</i>					
5 to 7 ft....	2 50	20 00			
<b>FAGUS sylvatica purpurea Riversi.</b> <i>River's Purple Beech.</i>					
10 to 12 ft.....	10 00				
12 to 15 ft.....	15 00				
<b>MORUS alba tatarica pendula.</b> <i>Tea's Weeping Mulberry.</i>					
2-yr. heads.....	2 75	25 00			
3-yr. heads.....	3 75	35 00			
<b>MALUS floribunda atropurpurea.</b> <i>Purple-leaf Flowering Crab.</i>	Each	10			
Very attractive. 5 to 6 ft....	\$1 25	\$10 00			
6 to 8 ft.....	1 50	12 50			
8 to 10 ft.....	2 00	17 50			
<b>PLATANUS orientalis.</b> <i>Oriental Plane.</i>					
6 to 8 ft.....	1 25	11 50			
10 to 12 ft., 1½ to 2-in. cal....	2 75	25 00			
2 to 2½-in. cal.....	3 75	35 00			
2½ to 3-in. cal.....	5 00				
3 to 4-in. cal.....	7 50				
4 to 5-in. cal.....	10 00				
<b>POPULUS nigra italica.</b> <i>Lombardy Poplar.</i>					
6 to 8 ft.....	50	4 00			
8 to 10 ft.....	75	6 50			
<b>SALISBURIA adiantifolia.</b> <i>Maiden-hair Tree.</i>					
8 to 10 ft.....	2 50	20 00			
10 to 12 ft., 1½ to 2-in. cal....	3 50	30 00			
<b>TILIA americana.</b> <i>American Linden.</i>					
12 to 15 ft., 2 to 2½-in. cal....	3 50	32 50			
12 to 15 ft., 2½ to 3-in. cal....	4 00	35 00			
15 to 20 ft., 3 to 3½-in. cal....	5 50	50 00			
<b>Tomentosa (argentea).</b> <i>Silver Linden.</i>					
10 to 12 ft., 1½ to 2-in. cal....	4 00	35 00			
12 to 15 ft., 2 to 2½-in. cal....	4 50	40 00			
12 to 15 ft., 2½ to 3-in. cal....	5 50	50 00			
12 to 15 ft., 3 to 4-in. cal.....	8 00	70 00			
15 to 20 ft., 4 to 5-in. cal.....	10 00				
<b>Vulgaris.</b> <i>European Linden.</i>					
10 to 12 ft., 1½ to 2-in. cal....	3 50	30 00			
10 to 12 ft., 2 to 2½-in. cal....	4 50	40 00			
10 to 12 ft., 2½ to 3-in. cal....	5 50	50 00			
<b>ULMUS americana.</b> <i>American Elm.</i>					
10 to 12 ft., 1½ to 2-in. cal....	3 00	25 00			
12 to 15 ft., 2 to 2½-in. cal....	4 00	35 00			
12 to 15 ft., 2½ to 3-in. cal....	5 00	45 00			
12 to 15 ft., 3 to 4-in. cal.....	6 50	60 00			

## GARDEN ROOTS

These are necessary items, often demanded in quantity, for which reason we maintain an unusually large and vigorous supply.

**ASPARAGUS.** We invite special attention to our large and splendid supply of Asparagus roots. We have specialized in growing one variety—Washington—because of its decided points of superiority over the old varieties. A fine heavy bearer, does not rust, of highest quality and commands top prices.

		10	100	1,000
<b>Washington.</b> 1-yr.....			\$1 00	\$8 00
2-yr.....			1 50	12 00
3-yr., extra-heavy.....			3 00	25 00
<b>CHIVES.</b> Medium size clumps.....	\$1 25	10 00		
<b>HOPS,</b> Golden Cluster. 2½-inch pots.....	1 25	10 00		
<b>HORSERADISH.</b> Sets.....	40	2 00	15 00	
<b>LAVENDER.</b> Field-grown.....	1 75	15 00		
<b>MINT, SPEAR- and PEPPER-</b> .....	90	7 00		
<b>RHUBARB.</b> Selected roots.....	1 00	8 00	60 00	
<b>SAGE,</b> Holt's Mammoth. Clumps.....	1 25	10 00	75 00	
2½-inch pots.....	1 00	8 00		
<b>TARRAGON.</b> Clumps.....	1 50	12 00		
3-inch pots.....	1 25	10 00		
<b>THYME.</b> Clumps.....	1 50	12 00		
2½-inch pots.....	1 25	10 00		



## STRAWBERRIES

For description of the different varieties offered in this Trade-List, see our retail Catalogue No. 120.

We specialize in the production of Strawberries, and never, in the history of our business, have we had a finer supply than we have this year. Each season we pot approximately a half million plants, and we especially recommend these pot-grown plants for spring planting, in preference to layers. Their extra vigor more than equalizes the difference in cost.

The layer plants we offer are well rooted, well developed, and are tied in bunches of 25. They are recommended for large or commercial plantings.

	Pot-grown		Layer	
	Doz.	100	100	1,000
Barrymore .....	\$0 60	\$4 00	\$1 00	\$8 00
Brandywine .....	60	4 00	1 00	8 00
Bun Special .....	75	5 00	1 25	10 00
California .....	60	4 00		
Chesapeake .....	75	5 00	1 25	10 00
Delicious .....	75	5 00		
Edmund Wilson .....	1 00	6 00		
Early Jersey Giant .....	75	5 00	1 25	10 00
Eaton .....	75	5 00	1 50	12 50
Gandy .....	60	4 00	1 00	8 00
Glen Mary .....	60	4 00	1 00	8 00
Howard No. 17 .....	60	4 00	1 00	8 00
Hundred Dollar .....	60	4 00	1 00	8 00
Joe .....	60	4 00	1 00	8 00
John H. Cook .....	1 00	6 00		
Judith .....	75	5 00		
Lupton .....	60	4 00	1 25	10 00
Marshall .....	60	4 00		
McKinley .....	60	4 00	1 00	8 00
New York .....	60	4 00	1 00	8 00
Nick Ohmer .....	60	4 00	1 00	8 00
Pearl .....	1 00	6 00	1 50	12 00
Premier .....	60	4 00	1 00	8 00
Senator Dunlap .....	60	4 00	1 00	8 00
Sharpless .....	60	4 00	1 00	8 00
Stevens' Late Champion .....	60	4 00	1 00	8 00
Success .....	60	4 00	1 00	8 00
William Belt .....	60	4 00	1 00	8 00

### Everbearing Strawberries

	Doz.	100	100	1,000
Champion Everbearing .....	\$1 00	\$7 50	\$2 50	\$18 00
MASTODON .....	2 50	15 00	3 50	30 00
Progressive .....	90	6 00	2 00	15 00
Superb .....	90	6 00	2 00	15 00



A thrifty Grape-vine

**GRAPES**

More and more Grapes are planted every year. Enterprising nurserymen are quick to seize this opportunity to sell good stock profitably.

We specialize in the production of Grape-vines, having at this time a supply of approximately 300,000 vines, exceedingly fine in both root and top.

	10	100
Agawam. 1-yr.....	\$1 25	\$10 00
2-yr.....	1 75	15 00
Brighton. 1-yr.....	1 75	15 00
2-yr.....	2 50	20 00
Caco is now generally recognized as being the highest in quality of all hardy Grapes. 1-yr.....	4 00	30 00
2-yr.....	6 00	50 00
Fruiting age.....	12 50	100 00
Campbell's Early. 1-yr.....	1 50	10 00
2-yr.....	1 80	15 00
Catawba. 1-yr.....	1 00	8 00
2-yr.....	1 25	10 00
Champagne. 2-yr., selected.....	3 00	25 00
Fruiting age.....	6 00	50 00
Concord. 1-yr.....	60	5 00
2-yr.....	\$60 per 1,000..	90 8 00
Fruiting age.....	4 00	35 00
Delaware. 1-yr.....	1 50	12 00
2-yr.....	2 00	18 00
Diamond (Moore's). 1-yr.....	1 00	9 00
2-yr.....	1 50	12 50
Goethe. 1-yr.....	1 50	12 00
2-yr.....	2 00	18 00
Moore's Early. 2-yr., medium.....		
	\$40 per 1,000..	60 5 00
2-yr., selected.....	\$70 per 1,000..	1 00 8 00
Fruiting age.....	5 00	45 00
Niagara. 1-yr.....	1 00	9 00
2-yr.....	1 50	12 00
Worden. 1-yr.....	1 00	8 00
2-yr.....	1 50	12 00

**DEWBERRIES**

These fine dwarf Blackberries are in excellent demand especially by the gardener with small area.

	100	1,000
Austin's Improved.....	\$2 50	\$20 00
Lucretia.....	2 50	20 00

**BLACKBERRIES**

No need to tell the merits of this fruit—everybody likes them and wants them.

We offer splendid root-cutting plants, or transplanted plants as indicated.

R.C. means root-cutting plants; Tr., transplanted stock.

We do not grow or offer sucker plants of Blackberries. We would not plant them ourselves, so do not consider it proper to offer them.

	10	100	1,000
Blowers. R.C.....	\$0 50	\$3 00	\$25 00
Tr.....	75	4 00	35 00
Early Harvest. R.C.....	50	3 00	25 00
Tr.....	75	4 00	35 00
Eldorado. R.C.....	50	3 00	25 00
Tr.....	75	4 00	35 00
Iceberg. Tr.....	1 00	6 00	
Joy. R.C.....	80	5 00	40 00
Tr.....	1 00	7 50	
Macatawa. R.C.....	60	3 50	30 00
Tr.....	80	5 00	40 00
Mersereau. R.C.....	50	3 00	25 00
Tr.....	75	4 00	35 00
Mount Pocono. R.C.....	2 00	12 50	
Star or Wonder. R.C. or Tips	75	4 00	35 00
Tr.....	80	5 00	
Taylor. R.C.....	50	3 00	25 00
Tr.....	75	4 00	35 00
Texas Everbearing. R.C....	60	3 50	30 00
Tr.....	80	5 00	45 00
Ward. R.C.....	50	3 00	25 00
Tr.....	75	4 00	35 00

**LOGANBERRIES**

Excellent cooking fruits which have enjoyed wide publicity and which sell well.

We offer an extra-fine lot of plants of this variety.

	100	1,000
Selected tip plants.....	\$10 00	\$80 00
Extra-heavy transplanted plants...	17 50	150 00

**JAPANESE WINEBERRY**

A novelty, with attractive fruits useful for dessert, canning, and wine-making. Sells easily and well. Heavy plants, \$1.50 for 10, \$10 per 100.

**RASPBERRIES**

These fine bush fruits are easily grown in the home-garden, and need only a slight pressure on the selling end to move rapidly. They are easily handled and profitable.

We offer Strong, Heavy, Transplanted Plants, marked Tr.; Strong Tip plants marked S.T., and Selected Suckers marked S.S.

	10	100	1,000
Columbian. S.T.	\$0 60	\$4 00	\$35 00
Tr.	1 00	7 50	
Cuthbert. Tr.	1 00	7 50	
S.S.	50	3 00	25 00
Cumberland. S.T.	50	3 50	30 00
Tr.	1 00	7 50	
Donboro. S.S.	1 00	8 00	60 00
Golden Queen. S.S.	1 00	8 00	
Tr.	1 50	10 00	
Herbert. S.S.	60	4 00	30 00
Honey Sweet. S.T.	60	4 00	
Kansas. S.T.	50	3 50	30 00
King. S.S.	50	3 00	
La France. S.S.	1 25	9 00	75 00
Tr.	2 00	15 00	
Latham. S.S.	75	5 00	40 00
Tr.	1 00	7 50	60 00
Ohta. S.S.	60	5 00	40 00
Tr.	1 00	7 50	
Plum Farmer. S.T.	50	3 50	30 00
Tr.	1 00	7 50	
Scarf. S.T.	60	4 00	
St. Regis. S.S.	40	2 00	15 00
Tr.	60	4 00	35 00
Fruiting.	1 00	7 50	
Victory. S.S.	60	5 00	40 00
Tr.	1 00	7 50	
White Queen. (Everbearing.) S.S.	5 00	40 00	

**STRAWBERRY-RASPBERRY**

A splendid large novelty berry, of true everbearing type. The fruit needs cooking to develop its flavor when it becomes delicious. Heavy plants, \$4 per 100, \$30 per 1,000.

**GOOSEBERRIES**

A fine hearty small fruit which is worth pushing. Federal Quarantine No. 26 prohibits the shipment of Gooseberries into territory west of Minnesota, Iowa, Missouri, Arkansas, and Louisiana.

	10	100
Carrie. 1-yr.	\$1 25	\$10 00
2-yr.	1 50	12 50
Downing. 1-yr.	1 00	8 00
2-yr.	1 25	10 00

**CURRANTS**

Popular small fruits which enjoy a steady sale. Federal Quarantine No. 26 prohibits the shipment of Currants into territory west of Minnesota, Iowa, Missouri, Arkansas, and Louisiana.

	10	100
Cherry. Red. 1-yr.	\$1 00	\$8 00
2-yr.	1 25	10 00
Fay's Prolific. Red. 1-yr.	1 00	8 00
2-yr.	1 25	10 00
Perfection. Red. 1-yr.	1 50	
2-yr.	2 00	
Pres. Wilder. Red. 1-yr.	1 00	8 00
2-yr.	1 25	10 00
Red Cross. Red. 1-yr.	1 00	8 00
2-yr.	1 25	10 00
Victoria. Red. 1-yr.	1 00	8 00
2-yr.	1 25	10 00
White Grape. White. 1-yr.	1 25	10 00
2-yr.	1 50	12 00

**FRUIT TREES**

Good, old standard fruits, the mainstay of the nursery business. They need no puffing—every nurseryman knows their value. His one care should be to secure our splendidly grown, complete line of varieties.

**APPLES**

Standard 2 and 3-yr.-old trees, strictly first class.

Baldwin	Northwestern Greening
Banana	Paragon
Ben Davis	Red Astrachan
Black Ben	Rome Beauty
Delicious	Roxbury Russet
Duchess	Stayman's Winesap
Early Harvest	Sweet Bough
Gravenstein	Tolman's Sweet
Grimes Golden	Twenty Ounce
Jonathan	Wealthy
Maiden's Blush	William's Early Red
Mammoth Black Twig	Yellow Transparent
McIntosh	York Imperial

\$4 for 10, \$35 per 100

Write for special quotations on lighter grades

LOVETT. The finest of all summer Apples. For description see Catalogue No. 120. \$1 each, \$9 for 10, \$75 per 100.

**CRAB-APPLES**

First-class trees as follows:

Hyslop	Transcendent
--------	--------------

\$4 for 10, \$35 per 100

**DWARF APPLES**

Trees of First Class

Baldwin	Rhode Island Greening
Delicious	Rome Beauty
Duchess	Stayman's Winesap
Grimes Golden	Wealthy
McIntosh	Yellow Transparent
Red Astrachan	

\$6 for 10, \$50 per 100

**PEARS**

Standard first-class trees, as follows:

Angouleme (Duchesse de)	Clapp's Favorite
Anjou	Kieffer
Bartlett	Seckel

\$6 for 10, \$50 per 100

**DWARF PEARS**

First-class as follows:

Angouleme	Clapp's Favorite
Anjou	Seckel
Bartlett	

\$6.50 for 10, \$60 per 100



A Suburban Fruit-Garden

## PEACHES

Trees, 4 to 6 feet, as follows:

Belle of Georgia	Elberta
Carmen	J. H. Hale
Crawford's Early	Hiley
Iron Mountain	Rochester

\$2.50 for 10, \$20 per 100

Also 3 to 4-ft. trees, \$2 for 10, \$15 per 100; 2 to 3-ft. trees, \$1.50 for 10, \$10 per 100

## NEW VARIETIES

The following new Peaches originated at the New Jersey Department of Agricultural Experiment Station. They have been tested widely, and pronounced good. We offer them for the first time this spring.

**Cumberland.** A white-fleshed semi-freestone Peach and the earliest of really high quality to mature its fruit. It ripens several days earlier than Carmen, and is far superior to that variety in quality, general appearance, and resistance to rot.

**Eclipse.** A yellow-fleshed second early freestone variety of high quality. Should prove most profitable commercially because of its season and its firm, yellow, high-flavored flesh.

**Radiance.** A seedling of Belle of Georgia, crossed with Greensboro. Ripens a few days after Cumberland. It resembles Belle of Georgia in shape, size, and general appearance, so might be considered an early fruiting form of that variety.

All grades at 10 cts. per tree above prices quoted above on standard varieties

## PLUMS

First class trees, as follows:

Abundance	Monarch
Bradshaw	Moore's Arctic
Burbank	Reine Claude
Grand Duke	Yellow Egg
Lombard	

\$4 for 10, \$35 per 100

## THREE VERY HARDY PLUMS

**Loring.** Fruit of good size and handsome deep red color when ripe. Tender, juicy flesh.

**Sapa.** A new Cherry-Plum hybrid. Has rich purple juice and deep wine-red flesh. Ripens early, is a heavy bearer, and the trees bear when young.

**Waneta.** A heavy annual bearer with handsome dark red fruits. Flesh of firmest texture, yellow, and of delightfully sweet flavor.

\$5 for 10, \$45 per 100

## CHERRIES

Extra-selected trees, as follows:

Black Tartarian	Napoleon
Early Richmond	Rockport
Gov. Wood	Schmidt's Bigarreau
Lambert	Windsor
Montmorency	Yellow Spanish

\$6.50 for 10, \$60 per 100

## QUINCES

First-class trees as follows:

Champion	Orange
----------	--------

\$6 for 10



GRAPES  
RASPBERRIES  
BLACKBERRIES  
CURRANTS  
GOOSEBERRIES  
STRAWBERRIES  
FRUIT TREES  
GARDEN ROOTS

LOVETT'S  
PLANTS THAT  
KEEP FAITH

ROSES  
PERENNIALS  
HEDGE PLANTS  
EVERGREEN TREES  
HARDY SHRUBS  
SHADE TREES  
VINES  
HERBS

MAIL THIS CARD TODAY

I would be glad to have the large, handsomely illustrated catalog of Lovett's Nursery sent to me free and without obligation on my part.

Please  
Write  
Plainly

Name.....

Address.....

Lov

If you have received LOVETT'S Catalog, kindly pass this card along to a friend or neighbor.

POST CARD

Two Cents  
Invested Here  
Will Save  
You Dollars

LOVETT'S NURSERY,

LITTLE SILVER,

BOX 303

NEW JERSEY.



Our Japanese Anemones are unsurpassed

## Lovett's Perennials

**B**ECAUSE we are specializing particularly in the production of Hardy Perennial Plants, and because we are growing them in great quantities by the most economical methods, we are able to supply splendid heavy plants at prices considerably lower than present average trade quotations.



Grenadin Hardy Pinks



Hybrid Delphiniums



Our Hardy Phlox are all heavy, field-grown plants



Lovett's Apples

## Lovett's Fruits

*S*INCE we grow and market a complete line of Ornamental and Fruit Stock, there is no better policy than to rely upon Lovett's Nursery as a source of supply for all stock needed. If it be desired, we can, and will be pleased to, ship stock direct to your customers under your own tags. Of course, we will see to it that your interests are protected in every way.

Lovett's Nursery  
Little Silver, N. J.



Caco  
Grapes



Mastodon Strawberry